
 ACON ADVANCED-CONNECTEK INC.	LC Connector Specification	DOC. No.CSP-FLC**-00-00		Rev.: D	Page:1 /6
		Approved/Date	Checked/Date	Written/Date	
		WUJUN 10/16/07'	~ 10/16/07'	HAIJIANG 10/16/07'	

LC Connector Specification

Rev.	Description	Written/Date	Checked/Date	Approved/Date
A	NEW RELEASE PER TJEECR-05004	WUJUN 01/14/05'	~ 01/14/05'	TUNG 01/14/05'
B	NEW RELEASE PER TJEECR-05024	YHY 08/16/05'	WUJUN 08/23/05'	TUNG 08/23/05''
C	NEW RELEASE PER TJEECR-07029	HAIJIANG 10/16/07'	~ 10/16/07'	WUJUN 10/16/07'
D	NEW RELEASE PER TJEECR-110	LIXIA 05/27/11'	DINO.CHEN 05/27/11'	WUJUN 05/27/11'

	LC Connector Specification	DOC. No.CSP-FLC**-00-00	Rev.: D	Page:2 /6
		Approved/Date	Checked/Date	Written/Date
		WUJUN 10/16/07'	~ 10/16/07'	HAIJIANG 10/16/07'

Features & Specifications

- Meets EIA/TIA 604-10 & IEC61754-20 standards
- Economical in both design and termination process
- Snap-in connector design Precision mechanical dimensions
- Reduce assembly time and simplifies training
- Reduces maintenance and creates consistent optical performance
- Stable performance
 - ≤ 0.2 dB typical MM
 - ≤ 0.15 dB typical SM
- Operating temperature -20°C ~70°C
Storage temperature -40°C ~85°C

Applications

- Telecommunication networks
- Data communication networks
- CATV networks
- Active device termination
- Instrumentation

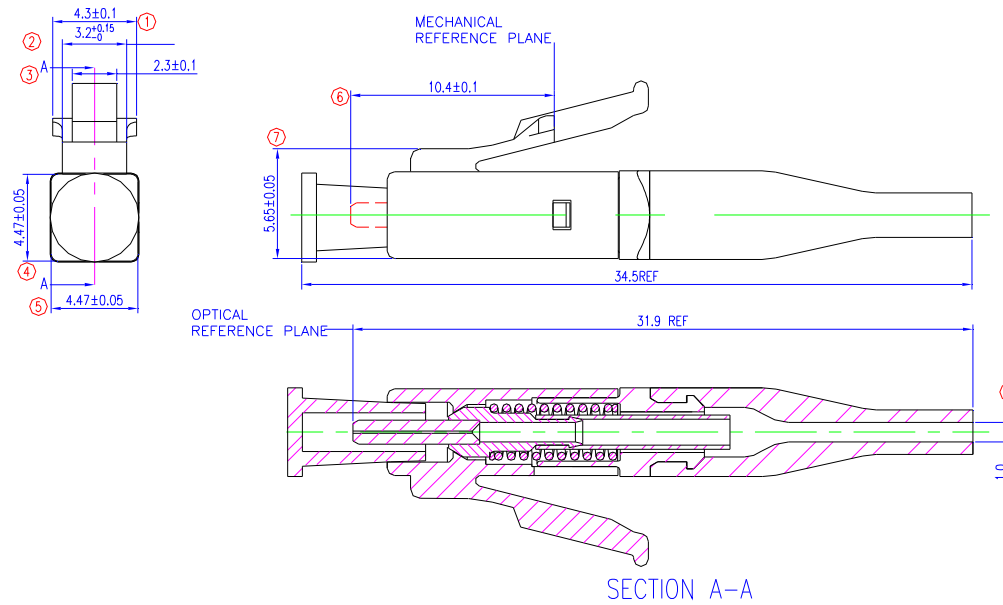
The LC connector is easily fielded mountable and is completely compatible with other LC hardware. This design, which provides non-optical disconnect terminations in a snap-in coupling mechanism, has been tested to the rigorous EIA/TIA 604-10 standards. Beige and blue color housing, White and beige boots for 900 micron buffered fiber and 2.0 mm jacketed cable.

All versions utilize precision ceramics, and the latest engineering polymers in their construction. With their pre-assembled one-piece design and pre-polished ferrules, these connectors provide quick and economical terminations both in factory and in the field settings. The pre-polished ferrule delivers a consequently consistent optical performance.

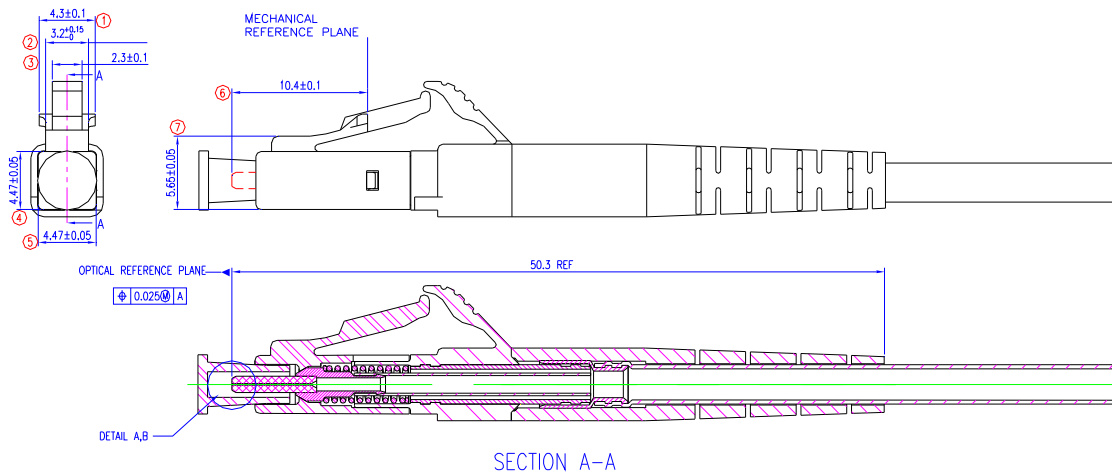
Molded polymer adapters containing either the precision ceramic or the phosphor bronze alignment sleeves are used to mate LC connectors.

DOC. No.CSP-FLC**-00-00	Rev.: D	Page:3 /6
Approved/Date	Checked/Date	Written/Date
WUJUN	~	HAIJIANG
10/16/07'	10/16/07'	10/16/07'

LC Connector SM and MM 0.9mm boot style

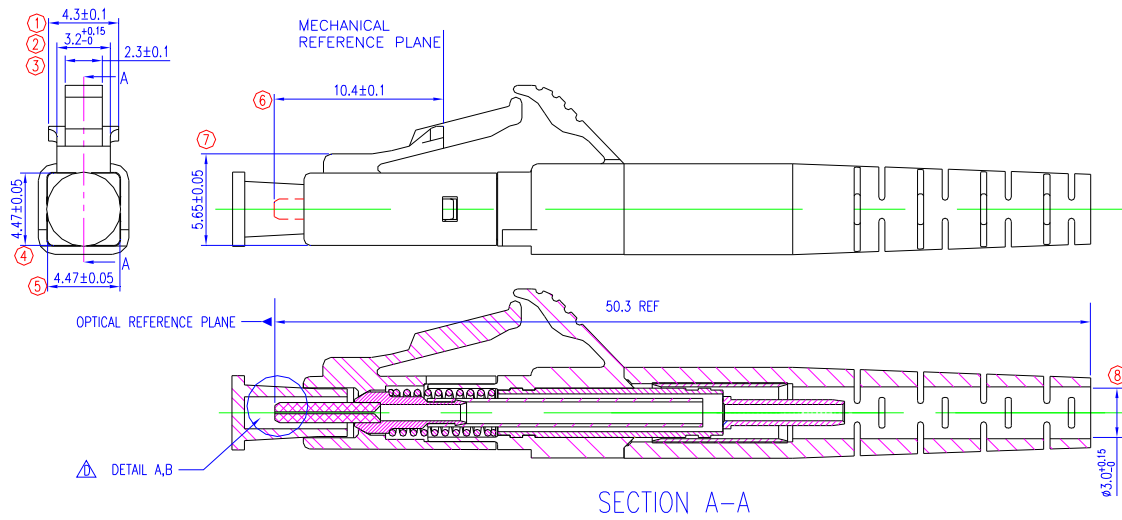


LC Connector SM and MM 2.0mm boot style

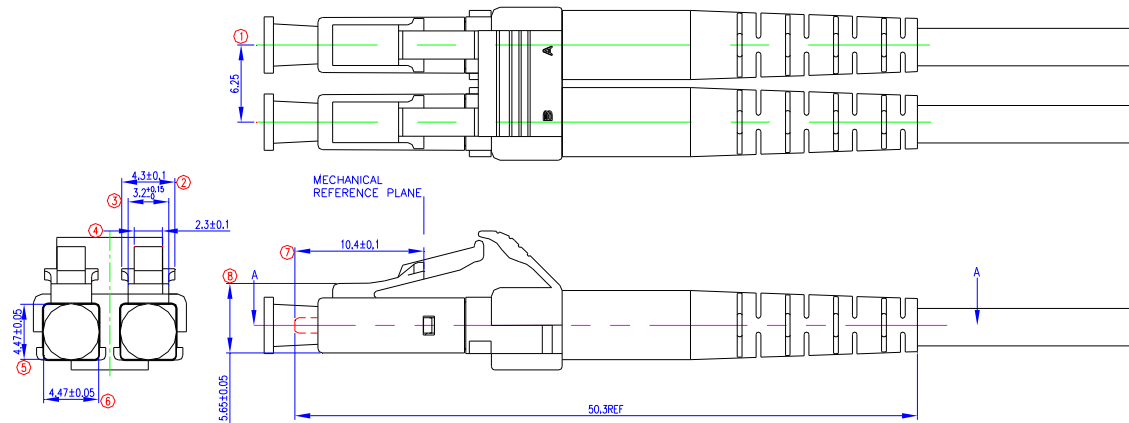


DOC. No.CSP-FLC**-00-00		Rev.: D	Page:4 /6
Approved/Date	Checked/Date	Written/Date	
WUJUN	~	HAIJIANG	
10/16/07'	10/16/07'	10/16/07'	

LC Connector SM and MM 3.0mm boot style



LC Connector SM and MM 2.0mm boot duplex style



LC Connector SM and MM 3.0mm boot duplex style

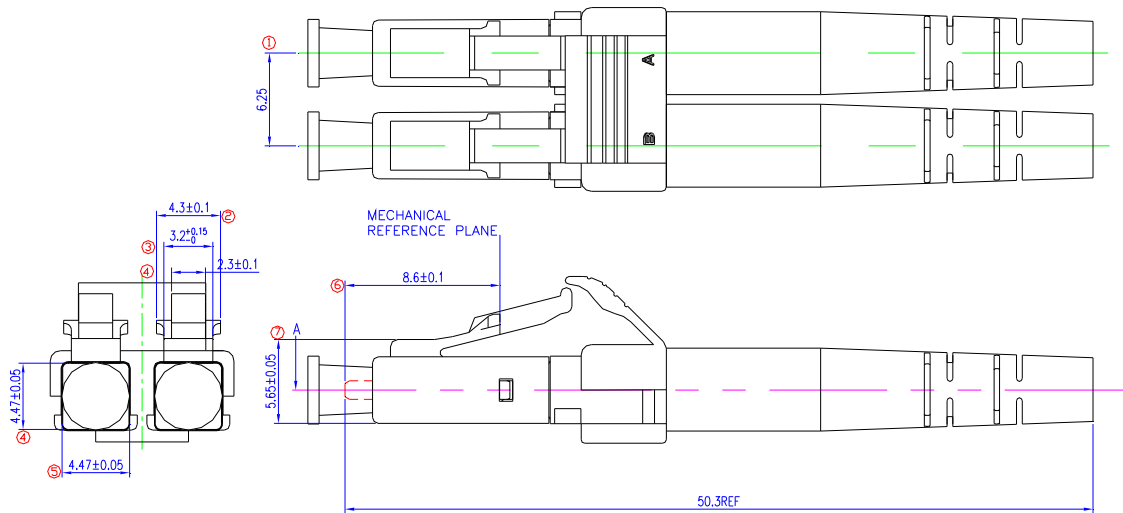


TABLE B Part Number

 F LC** **-**-** * + 00
 ① ② ③ ④ ⑤

① Cable diameter:

A: 0.9mm

B: 2.0mm

C: 3.0mm

② Type:

SM: SIMPLEX & MULTI PIECE

SO: SIMPLEX & ONE PIECE

DM: DUPLEX & MULTI PIECE

DO: DUPLEX & ONE PIECE

③ Ferrule Type:

** : SEE TABLE C

④ Coupling & Duplex Clip Color:

B : Blue (For S.M.)

E : Beige (For M.M.)

A : Aqua

G : Green (For APC)

⑤ Boot Color:

W: WHITE

E : BEIGE (PANTONE COOL GRAY 2C)

R: RED


K : BLACK

G: GREEN

B : BLUE

TABLE C

Code	FERRULR PART NUMBER.	ID	CONCENTRICITY	REMARK
16	FLC00-F-2161	0.126~0.127mm	0.001	S.M.
14	FLC00-F-2141	0.125~0.126mm	0.001	S.M./APC
18	FLC00-F-2181	0.126~0.130mm	0.006	M.M.
17	FLC00-F-2171	0.125~0.126mm	0.006	M.M.
11	FLC00-F-2111	0.125~0.126mm	0.0005	S.M./APC

	LC Connector Specification	DOC. No.CSP-FLC**-00-00	Rev.: D	Page:6 /6
		Approved/Date	Checked/Date	Written/Date
		WUJUN 10/16/07'	~ 10/16/07'	HAIJIANG 10/16/07'

Order Number	Description
FLC09S*-*-*00	LC Connector, S.M. & M.M. zirconia PC/APC ferrule, One piece or Multi piece type simplex.
FLC20S*-*-*00	LC Connector, S.M. & M.M. zirconia PC /APC ferrule, One piece or Multi piece type simplex.
FLC30S*-*-*00	LC Connector, S.M. & M.M. zirconia PC/APC ferrule, One piece or Multi piece type simplex.
FLC20D*-*-*00	LC Connector, S.M. & M.M. zirconia PC/APC ferrule, One piece or Multi piece type duplex.
FLC30D*-*-*00	LC Connector, S.M. & M.M. zirconia PC /APC ferrule, One piece or Multi piece type duplex.